



RELEASE GUIDE

GEOMEDIA SMART CLIENT 2018

February 27, 2018



Contents

About This Release	3
New Platforms	3
Licensing.....	3
GeoMedia Smart Client Product Tiers	3
GeoMedia Smart Client Essentials	3
GeoMedia Smart Client Advantage	4
GeoMedia Smart Client Professional.....	4
New in 2018	4
OpenStreet Map integration.....	4
Windows 10 Location API.....	6
4K Display Support	7
Extended OGC Service support	8
Java 9	9
Seamless start of Geomedia Smart Client.....	9
Additional Changes.....	9
Active Directory	9
Assembly Cache	9
Decimal representation of geographic coordinate reference system	9
Linux & Mac OS X support.....	9
Workflow - resolve dependencies	9
Workflow - Extended length of form field names	9
Migration Steps from 2016 to 2018.....	9
System Requirements	10
GeoMedia Smart Client	10
Issues Resolved	12
About Us	18



ABOUT THIS RELEASE

This document describes the enhancements for GeoMedia® Smart Client. Although the information in this document is current as of the product release, see the Hexagon Geospatial Support website for the most current version.

This release includes both enhancements and fixes. For information on fixes that were made to GeoMedia Smart Client for this release, see the Issues Resolved section. For information on enhancements, see the New Technology section.

This document is only an overview and does not provide all the details about the product's capabilities. See the online help and other documents provided with GeoMedia Smart Client for more information.

NEW PLATFORMS

LICENSING

Starting with the Power Portfolio 2018 release, licenses are no longer based on Certificate-file based technology. Instead, licenses are based on Activation IDs, allowing you to activate products without providing Host IDs or other hardware-related parameters. You can also re-host without emailing the licensing team for assistance. The Power Portfolio 2018 release also includes improved tools that make it easier to install licenses, set up license servers, and provide more professional error handling. Finally, the Power Portfolio 2018 release includes improved customer notification in the products, such as an “end of subscription” message in the Start-up screen. These more secure and automated processes, along with a new licensing portal, provide you with a better overall user experience.

GEOMEDIA SMART CLIENT PRODUCT TIERS

GeoMedia Smart Client is a GIS workflow management system that connects tasks and dependencies across different roles in a process and dynamically configures to reflect a user's role and specific workflow steps. End users can use advanced geospatial functionality via simple-to-use, map-based tools, disentangling them from non-essential tasks and focusing their time on their area of expertise.

Workflow Manager is a standalone product and a rich toolset that lets you construct highly-focused business workflows that primarily support attributive data, but also may contain a spatial component. It provides the means for third parties, contractors, and even the public to make use of task-specific, highly-specialized processes that tie back to your enterprise operations. No programming skills are required to build optimized form-based workflows that can be made available in the browser and through Geospatial Portal.

GeoMedia Smart Client is available in three product tiers (Essentials, Advantage, Professional) to complement a broad range of customers – from a small business with a few users doing simple vector editing, to large, multi-disciplinary environments supporting multiple business workflows across various departments.

GEOMEDIA SMART CLIENT ESSENTIALS

Organizations can provide high-end vector redlining functionality and the ability for an unlimited number of users to display raster and vector maps, analyze and query data, print, measure, and use dimensioning functions.

GEOMEDIA SMART CLIENT ADVANTAGE

The Advantage level tier of GeoMedia Smart Client contains all the features and functionality of the Essentials product, plus the ability for an organization to use predefined business process workflows and edit data. The additional Workflow Manager – Runtime module enables customers to run pre-built workflows, edit attributes, or capture and change spatial data on the web client and push the changes back to the server database.

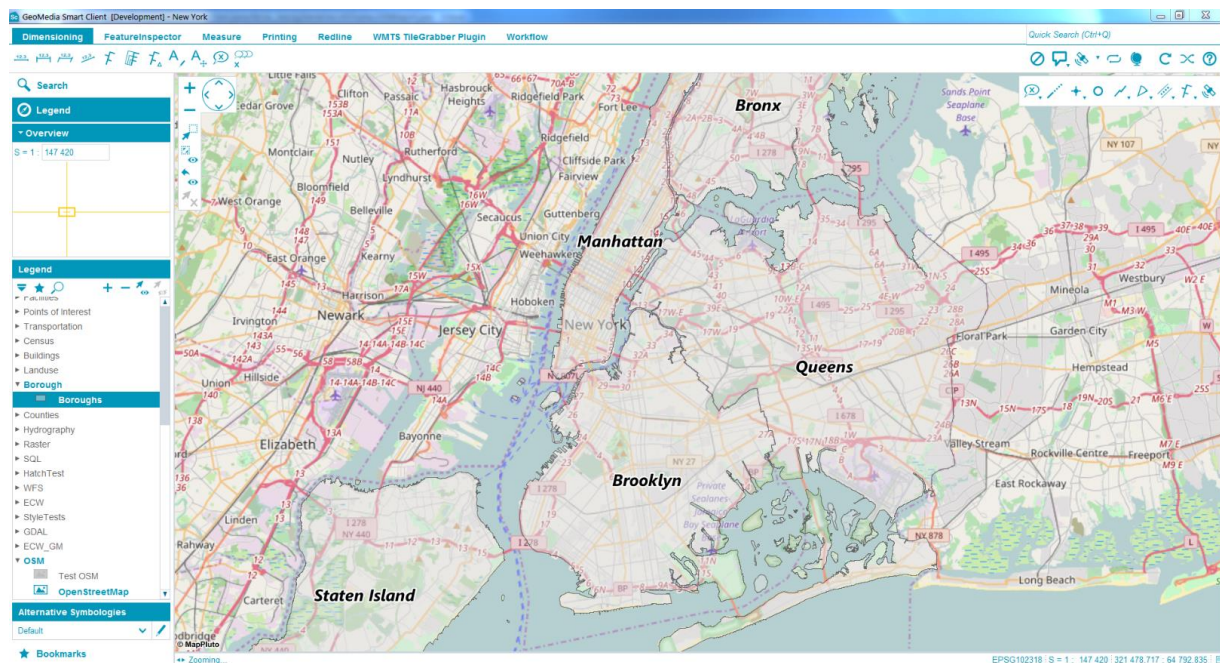
GEOMEDIA SMART CLIENT PROFESSIONAL

The Professional level tier of GeoMedia Smart Client contains all the features and functionality of the Advantage product, plus it includes Workflow Manager – Editor, enabling an organization to develop workflows or revise the structure, process, and forms of current ones.

NEW IN 2018

OPENSTREETMAP INTEGRATION

OpenStreetMap® (OSM) integration provides an easy way to setup a new project without any background data. OSM in GMSC 2018 is available for the Java client as well as for Public Maps.





The background map content is based on information provided from OSM contributors.

Feature ^	WMS
Features	WFS
New Feature	WMTS
Current:	IWS
WMTS	Bing Maps
New WMTS	OSM

Configuration

Template: **OpenStreetMap**

Uri: *
Thunderforest - OpenCycleMap
Thunderforest - Transport
Custom

Copyright:  

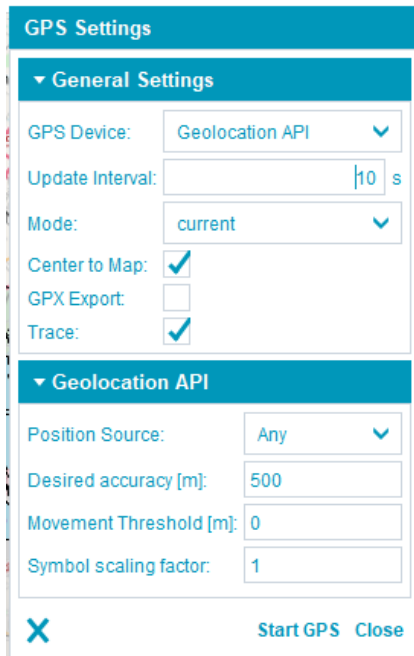
OpenStreetMap® is open data, licensed under the Open Data Commons Open Database License (ODbL) by the OpenStreetMap Foundation (OSMF). Please consider the copyright and license information at <https://www.openstreetmap.org/copyright/en> before adding this layer to your project. Please read also the [Tile Usage Policy](#).

Templates simplify the OSM configuration in Smart Client Administrator and Public Maps Administrator.



WINDOWS 10 LOCATION API

Use GPS positions via the standard Windows 10 API with no additional drivers or protocols.



The screenshot shows the 'GPS Settings' dialog box in Windows 10. It is divided into two sections: 'General Settings' and 'Geolocation API'. In the 'General Settings' section, 'GPS Device' is set to 'Geolocation API', 'Update Interval' is 10 seconds, 'Mode' is 'current', 'Center to Map' is checked, 'GPX Export' is unchecked, and 'Trace' is checked. In the 'Geolocation API' section, 'Position Source' is 'Any', 'Desired accuracy [m]' is 500, 'Movement Threshold [m]' is 0, and 'Symbol scaling factor' is 1. At the bottom, there is a close button (X) and 'Start GPS' and 'Close' buttons.

Desired accuracy must be a meaningful value. To help determine desired accuracy values, Microsoft offers a valid range for each position source. For more information, visit: <https://docs.microsoft.com/en-us/uwp/api/windows.devices.geolocation>

Accuracy with different settings:

GPS: within approximately 10 meters

Wi-Fi: between approximately 30 meters and 500 meters

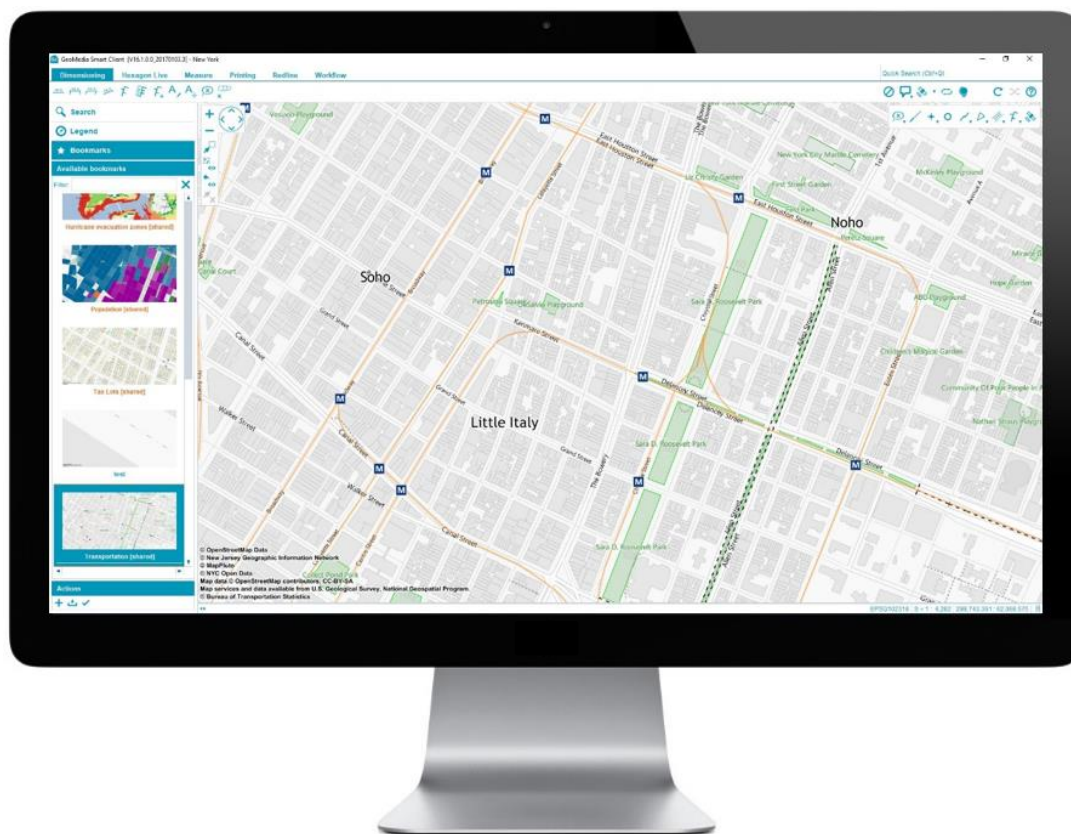
Cell towers: between approximately 300 meters and 3,000 meters

IP address: between approximately 1,000 meters and 5,000 meters



4K DISPLAY SUPPORT

With GeoMedia Smart Client 2018, you get full 4K support in the Java client, Workflows, and Public Maps.



Limitation:

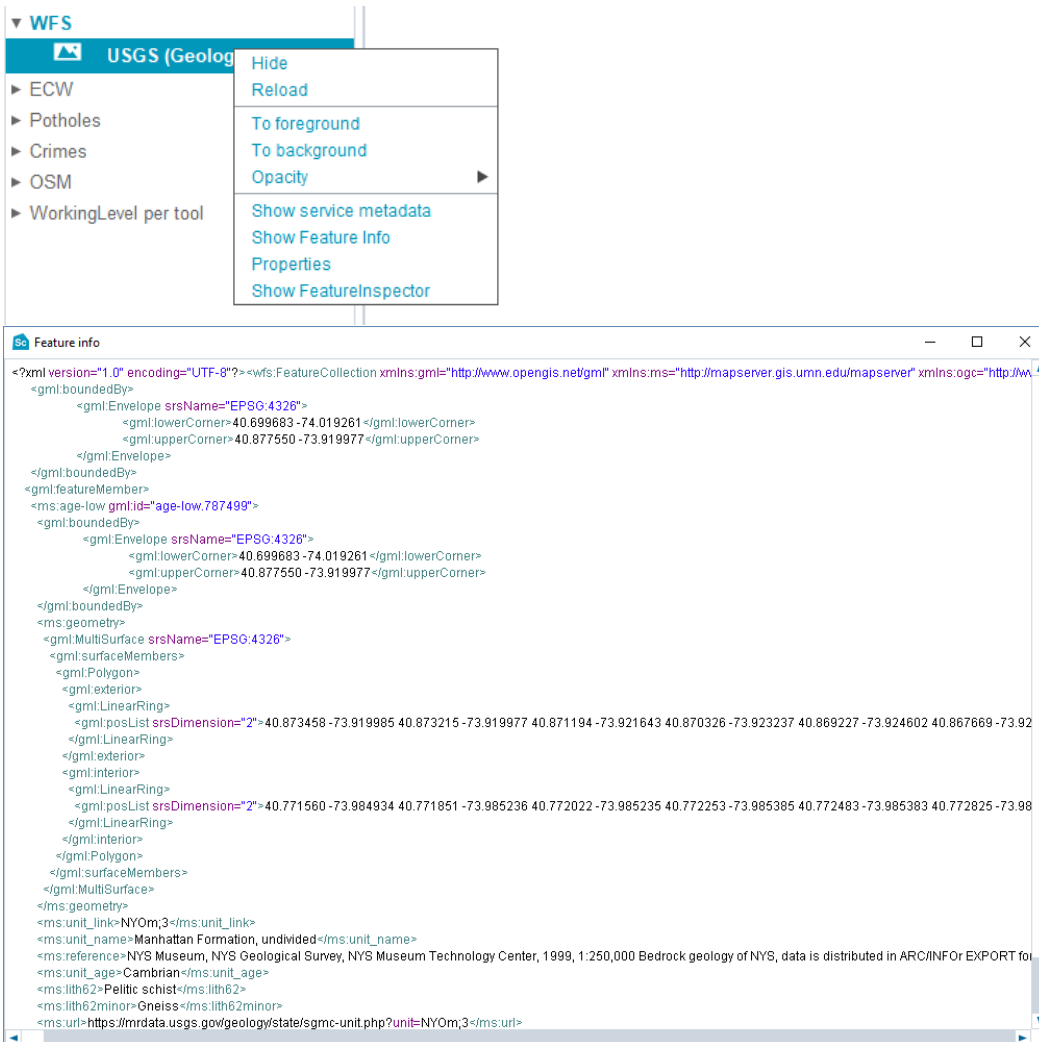
GeoMedia Smart Client 2018 doesn't support the generation of HiDPI raster map tiles.



EXTENDED OGC SERVICE SUPPORT

There are three additional actions for your Open Geospatial Consortium Web Map Service (WMS), Web Feature Service (WFS), and Web Map Tile Service (WMTS):

- Discover Service Metadata
- Legend Graphic integration (only WMS and WMTS)
- Get Feature Info



The screenshot shows a web application interface with a layer list on the left and a 'Feature info' window open on the right.

Layer List:

- ▼ WFS
 - USGS (Geolog)
 - Hide
 - Reload
 - To foreground
 - To background
 - Opacity
 - Show service metadata
 - Show Feature Info
 - Properties
 - Show FeatureInspector
 - ECW
 - Potholes
 - Crimes
 - OSM
 - WorkingLevel per tool

Feature info window:

```
<?xml version="1.0" encoding="UTF-8"?><wfs:FeatureCollection xmlns:gml="http://www.opengis.net/gml" xmlns:ms="http://mapserver.gis.umn.edu/mapserver" xmlns:ogc="http://www.opengis.net/ogc" xmlns:xsi="http://www.w3.org/2001/XMLSchema-instance" xsi:schemaLocation="http://www.opengis.net/gml http://schemas.opengis.net/gml/3.1.1/featureCollection.xsd" >
  <gml:boundedBy>
    <gml:Envelope srsName="EPSG:4326">
      <gml:lowerCorner>40.699683 -74.019261 </gml:lowerCorner>
      <gml:upperCorner>40.877550 -73.919977 </gml:upperCorner>
    </gml:Envelope>
  </gml:boundedBy>
  <gml:featureMember>
    <ms:age-low gml:id="age-low.787499">
      <gml:boundedBy>
        <gml:Envelope srsName="EPSG:4326">
          <gml:lowerCorner>40.699683 -74.019261 </gml:lowerCorner>
          <gml:upperCorner>40.877550 -73.919977 </gml:upperCorner>
        </gml:Envelope>
      </gml:boundedBy>
      <ms:geometry>
        <gml:MultiSurface srsName="EPSG:4326">
          <gml:surfaceMembers>
            <gml:Polygon>
              <gml:exterior>
                <gml:LinearRing>
                  <gml:posList srsDimension="2">40.873458 -73.919985 40.873215 -73.919977 40.871194 -73.921643 40.870326 -73.923237 40.869227 -73.924602 40.867669 -73.925237 </gml:posList>
                </gml:LinearRing>
              </gml:exterior>
              <gml:interior>
                <gml:LinearRing>
                  <gml:posList srsDimension="2">40.771560 -73.984934 40.771851 -73.985236 40.772022 -73.985235 40.772253 -73.985385 40.772483 -73.985383 40.772825 -73.985383 </gml:posList>
                </gml:LinearRing>
              </gml:interior>
            </gml:Polygon>
          </gml:surfaceMembers>
        </gml:MultiSurface>
      </ms:geometry>
      <ms:unit_link>NYOm;3</ms:unit_link>
      <ms:unit_name>Manhattan Formation, undivided</ms:unit_name>
      <ms:reference>NYS Museum, NYS Geological Survey, NYS Museum Technology Center, 1999, 1:250,000 Bedrock geology of NYS, data is distributed in ARC/INFO EXPORT format</ms:reference>
      <ms:unit_age>Cambrian</ms:unit_age>
      <ms:lith62>Pellitic schist</ms:lith62>
      <ms:lith62minor>Oneiss</ms:lith62minor>
      <ms:uri>https://mrdata.usgs.gov/geology/state/sgmc-unit.php?unit=NYOm;3</ms:uri>
    </ms:age-low>
  </gml:featureMember>
</wfs:FeatureCollection>
```


JAVA 9

GeoMedia Smart Client 2018 is compatible with Java 9 which guarantees free Java SE Public Updates from Oracle to maintain system security. Because Java 9 won't support 32-bit any longer, only 64-bit browser and client operating systems are usable for GeoMedia Smart Client 2018.

SEAMLESS START OF GEOMEDIA SMART CLIENT

With GeoMedia Smart Client 2018, the client, as well as the PrintLayout Editor, has a seamless start. This eliminates the need for downloads.

ADDITIONAL CHANGES

ACTIVE DIRECTORY

In GeoMedia Smart Client 2018, multilevel hierarchy on Active Directory is supported, giving you access to nested groups.

ASSEMBLY CACHE

In GeoMedia Smart Client 2018 the Assembly cache moved from **WINDOWS\Microsoft.NET\assembly\GAC_MSIL** to the corresponding folders directly in the installation folder. All *.dll's are now found in the different folders of **\GeoMedia Smart Client\Program**.

DECIMAL REPRESENTATION OF GEOGRAPHIC COORDINATE REFERENCE SYSTEM

Every geographic coordinate reference system will also be shown in a decimal representation in the status bar.

LINUX & MAC OS X SUPPORT

Linux and Mac OS X are considered viable for GeoMedia Smart Client 2018. However, these operating systems will no longer be supported in subsequent releases.

WORKFLOW - RESOLVE DEPENDENCIES

A ComboBox field receives a new value by dependency-resolving only if the value is in its list of values. Otherwise, its value is set to null. All children of a ComboBox field were resolved with the valid value or null, not last persisted value anymore.

WORKFLOW - EXTENDED LENGTH OF FORM FIELD NAMES

Names of form fields can now be longer than 30 characters. Therefore, more complex database schemas can be managed.

MIGRATION STEPS FROM 2016 TO 2018

Note: Only needed for queries, if the column type in the database is TEXT based and the input could be a number.

You must change the queries and cast the input to match the database column type:

```
SELECT .... FROM TABLE WHERE ATTRIBUTE=CAST({ENTITY.ATTRIBUTE} AS text)
```



SYSTEM REQUIREMENTS

GEOMEDIA SMART CLIENT

Computer/ Processor	Server side: requires 1.4 GHz minimum (64-bit) Client side: 1 GHz minimum (64-bit)
Memory (RAM)	Server side: 8 GB minimum Client side: 2 GB minimum
Disk Space	Server side: 512 MB for application Additional disk space requirements vary depending on the amount of geodata
Operating Systems	<p>Server side:</p> <ul style="list-style-type: none"> ● Windows® Server 2012 (64-bit) ● Windows® Server 2012 R2 (64-bit) ● Windows® Server 2016 <p>Windows® Server will be supported until the end of Microsoft's Mainstream support of the product. https://support.microsoft.com/en-us/lifecycle</p> <p>Client side:</p> <ul style="list-style-type: none"> ● Any Microsoft operating system which is certified for Java Runtime Environment (JRE) version 9 <p>For example:</p> <ul style="list-style-type: none"> ● Windows® 7 SP1 (64-bit) ● Windows® 8.1 (64-bit) ● Windows® 10 (64-bit) <p>Windows® OS will be supported until the end of Microsoft's Mainstream support of the product. https://support.microsoft.com/en-us/lifecycle</p>



Database Server Engines	<p>Database Servers (Read / Write)</p> <ul style="list-style-type: none"> ● Oracle® Server 12c or higher (32-bit and 64-bit) ● SQL Server® 2014 SP2 or higher (32-bit and 64-bit) ● Postgres SQL 9.3 or higher (32-bit and 64-bit)
Additional Software	<p>Server Side:</p> <ul style="list-style-type: none"> ● .NET Framework 4.5.2 ● Windows Installer 3.1 or higher ● MDAC 2.7 or WDAC 9.0.1 ● IIS 8 or higher <p>Depending on database:</p> <ul style="list-style-type: none"> ● Access Database Engine (64-bit) - part of the GMSC installation media ● Oracle 12c ODAC or higher <p>Client side:</p> <ul style="list-style-type: none"> ● Java Runtime Environment (JRE) Release 9.
Browser	<ul style="list-style-type: none"> ● IE 11 and Microsoft Edge ● Chrome 63 ● Firefox 57
Graphics Displays	Recommended screen resolution of 1280 x 1024 or better with 24-bit color
Peripherals	<p>Server side: Access to DVD drive</p> <p>Client side: Mouse or pen for geodata input</p>
Input device for tablets	Client side: Digitizer is recommended



ISSUES RESOLVED

Issue #	Summary	Description / How to Reproduce
SC-851	Workflow: List-Row has still hover-state after action-click and mouse is moved away	View a WF-LIST with row actions. Move the mouse over some of the rows. Row with mouse-hover changes to another background color. Click on a row action (no redirect action), and the row has still mouse-hover state.
SC-869	Workflow: List columns do not wrap words at spaces	If the columns of a list are wrapped because of auto-sizing (kendoUI grid width), the words are hard wrapped instead of wrapped at spaces.
SC-873	RuntimeLicence: FormSettings and WorkflowSettings files are not validated before upload	It is possible to upload any xml file. Expected: only valid (formsettings.xsd and workflowsettings.xsd) xml files are allowed.
SC-923	Workflow: attribute editable="false" on <FormFile> doesn't work properly	If the user defines editable="false" for <FormFile>, clicking on the "Select" button allows the user to select a file.
SC-1600	Licensing: Version check isn't correct	The licensing API returns the wrong version, which is 0. This would allow a GMSC 2013 license (if the expiration date isn't reached) to work for a GMSC 2016 download.
SC-1838	Two different tile services publishing the same feature at the same time causes issues	Both servers get a job with the same featureclass in it, and then there are problems with the tmp and delete folders in the servercache, which causes problems, including the possibility of the publish task to fail.
SC-1964	Bookmark displays "Visible featureclasses", even when this option is not checked when saving the BookmarkWorkflowEditor: Sql and Session value editor always attach scope	Bookmark with "Center of the map" as the only option. When this bookmark is loaded, it also loads "Visible featureclasses".



SC-1988	Unable to delete project	<p>Some projects cannot be deleted, resulting in an error: 08.02.2017 11:33:01 ERROR - Controller Project has raised an exception in Action Delete. System.Data.SqlClient.SqlException: Subquery returned more than 1 value. This is not permitted when the subquery follows =, !=, <, <=, >, >= or when the subquery is used as an expression. The statement has been terminated.</p> <p>It has been found that anytime there are multiple Actions associated with a project in the Administrator, that project cannot be deleted due to the query containing the '=' operator. In cases where there is a single Action assigned to a project, that project can be deleted. Trigger should be altered to contain 'IN' operator instead of '='.</p> <p>'RPI_PLUGINACTION_DEL_TRG' and 'RPI_PROJECT_DEL_TRG'</p> <p>Workflow to replicate:</p> <ol style="list-style-type: none"> 1. Login at the administrator. 2. Make TestAction the current project. 3. Review actions 'Test' and 'Test1' noting that they are assigned to the project 'TestAction' (actions are not setup to function, testing this case only) 4. Attempt to delete the 'TestAction' project and observe the message 'Unexpected error ocured' in the browser dialog. If the log file is reviewed, it will show what is reported above (log file attached). 5. Review again the actions, and change 'Test' action to have no associated project, leaving only a single action associated to the project 'TestAction'. 6. Attempt to delete the project 'TestAction', and note that it does as it should.
SC-1989	Workflows: resolve dependency issue of multiple ComboBoxes	
SC-1993	PublicMaps: Magnifying Glass right of the fulltextsearch with nofull text search option does not function	There was a Magnifying Glass (button) to the right of the fulltextsearch with no functionality, and it has been removed to allow for better usability.
SC-1994	The Fulltextsearch in PublicMaps does not zoom to a result when using the Enter key	The Fulltextsearch in PublicMaps requires an additional Mouse Click to zoom to a result when the user enters (or cuts and pastes) the correct and full search string and then hits the Enter key.



<p>SC-1996</p>	<p>Smart Client cannot reproject WMS layers</p>	<p>The WMS from Environment and Climate Change Canada is displaying incorrectly in Smart Client</p> <p>We are using EPSG 3395 as the project coordinate system. The incoming WMS is in EPSG 3857.</p> <p>After various tests, we think the issue has to do with the way Smart Client reprojects the WMS layer.</p> <p>In previous versions of GMSC, you were able to select a coordinate system for WMS from a dropdown list. In the latest version you can only manually type in an SRS. The axis order is also a required field now. Is this problem related to the new required fields, the coordinate system, or something else? The WMS displays correctly in GeoMedia. We do not have an ini file for this feature. There is no username or password required. Also note: If you have a saved username and password, Smart Client will automatically try to add the password parameter to the WMS URL. This will cause the URL to be invalid.</p> <p>Steps to replicate:</p> <p>In the Smart Client Administrator, create a new project using EPSG 3395 as the coordinate system. Add Bing Maps as your background layer. Add a new WMS feature using the WMS URLs mentioned above. Add the features to the legend, assign the feature role, and log into Smart Client. Turn on the Bing Maps layer. Once that has loaded, turn on the WMS layer. Notice that the weather layer displays as a smear in the wrong areas. The location of the smear changes as you pan the map around. Also note, when zoomed to the full project extents (in our case, Canada and America), the layers are not lined up. Turn the opacity down to do a comparison of the layers.</p> <p>WMS 1 WMS URL: http://geo.weather.gc.ca:80/geomet/?lang=E&service=WMS WMS Entity: RADAR - Radar reflectivity (Rain) WMS Get Capabilities: http://geo.weather.gc.ca/geomet/?lang=E&service=WMS&request=GetCapabilities Axis Order: Easting Northing SRS: 3857</p> <p>WMS 2 WMS URL: https://basemap.nationalmap.gov:443/arcgis/services/USGSTopo/MapServer/WMSServer?service=WMS WMS Entity: Layers WMS Get Capabilities: https://basemap.nationalmap.gov/arcgis/services/USGSTopo/MapServer/WMSServer?service=WMS&request=GetCapabilities Axis Order: Easting Northing SRS: 3857</p>
----------------	---	---



SC-1998	Multi-geometry features not displaying correctly in PublicMaps	<p>Client reported that multi-geometry features from a polygon feature class do not display in PublicMaps, whereas the other non-multiple geometry features i.e., individual polygons, display fine. This issue was replicated in 16.02, and research was extended to other feature classes including point, line, and compound. That research is included in a document attached to this guide.</p> <p>---</p> <p>Support notes: It seems there is a problem with the projection EPSG:2193. SQL queries were traced, and in MS SQL, the data displayed correctly. Data display correctly in GMSC as well. It is only PublicMaps not displaying all features. The problem could not be reproduced when working with data exported to EPSG:3857.</p> <p>Attached: 1) GMSC.zip - project database (MSSQL 2016, database version is 13) 2) GeoTranSpatial02.zip - database with the sample data located in New Zealand (MSSQL 2016, database version is 13) 3) Screenshots from GeoMedia, MSSQL, SmartClientGeoMedia Smart Client, and PublicMaps showing the differences. 4) Original document from the customer</p>
SC-2015	Workflow with PostGIS leaves open connections	<p>After a few (>13) successful workflow calls, the workflow engine can no longer connect to PostGIS</p> <p>System.Exception: Timeout while getting a connection from pool. at Npgsql.NpgsqlConnectorPool.RequestConnector(NpgsqlConnection Connection) at Npgsql.NpgsqlConnection.Open()</p>
SC-2018	LTT - W3P.exe - Cannot perform operation while another user is in revision set	<p>Experiencing issue using GeoMedia Smart Client with Oracle Workspace Manager activated (LTT).</p> <p>It appears that GeoMedia Smart Client has some open sessions at the DB level (locked by W3P.exe). As this keeps the Oracle Workspace locked, we cannot merge/commit this Workspace.</p>
SC-2021	java.lang.NullPointerException at GMSC start - error during map mouse event	<p>The NullPointerException will be caught and logged by the Map. No negative side-effects are found.</p>
SC-2034	Administrator - New Features import does not see other schemas on PostGIS	<p>The New Features -> From Database import tool in GMSC Administrator ignores tables located in schemas other than public. For example, GeoMedia recognizes all schemas that are available for a user (see GeoMedia.png).</p> <p>Steps to reproduce: 1) On a PostGIS server with some data that is visible to GMSC Administrator, create a new schema. 2) Export any data to the new schema.table. 3) Run GMSC/Administrator. 4) Try to import new Postgres features -> only features from public schema are recognized.</p> <p>A workaround is to replicate the features in public schema, import them, and then change the table names in GMSC metadata.</p>



SC-2038	GMSC Workflow is either crashing/locking up GMSC or is consuming all system memory until System lock down.	<ul style="list-style-type: none"> GMSC 2015.4 at Saxonia Police, most recent Java on Windows 7 x64 When using Java 32 Bit client, the workflow can be executed about 10-30 times before the application is crashing with a Memory usage of about 1000 MB for j2plauncher.exe . Java 64 Bit cannot be used actually for this customer, but has shown similar results. Also a short term update to GMSC 2016 seems not possible, but the issue is replicable there as well. To ensure that this isn't a Java limitation, it was tested also in a 64-Bit Java along with increased heap size (1600m), the Client application didn't crash but as java is consuming all available memory during the time, the application / machine becomes unusable. Style tests don't work. Excludes various sources from language update. Commit warning if ws_src or xsd_src does not exist. Replace NotImplementedException with UnsupportedOperationException. Add module java.xml.bind to compiler. Build does not fail if unit tests fail.
SC-2067	Client: No Legend Icon for dynamic labeling	
SC-2076	LegendiconLegend shows incorrect icon for GPS feature	
SC-2078	Transparency is not handled correctly for GWMxxx Datasources	GWM doesn't handle transparency any more using GMSC 2016 / GWM 2016. Even when color FFFFFFF is defined in symbology as transparent color, transparency is not handled as expected.
SC-2081	Administrator: Username and Password of WMS causes an error	04.12.2017 13:44:05 ERROR - Controller Feature has raised an exception in Action ResolveDependency. Intergraph.Emea.Workflows.ResolveModelException: Could not resolve property 'DefaultValue'.
SC-2082	Circles cannot be added to or subtracted from a polygon or circle	The actions "Merge" and "Spatial Difference" are not enabled, so users cannot add a circle to or subtract it from a polygon.
SC-2084	Client: Exception during reload	5 Dec 2017 09:11:21 SEVERE: --> [Thread-10] com.intergraph.web.ui.searchhub.SearchHub\$SearchQueueThread.run java.lang.InterruptedExceotion
SC-2090	PublicMaps: Cannot save new POI	
SC-2095	QuickPick with geometry doesn't select all matching objects if the geometry is larger than the map bounds	If SelectionMode.Geometry is used for SpatialAnalysis and the geometry is larger than the map bounds then only those objects are selected which intersect the border of the selection geometry and not those which are inside the geometries because the server-side search only uses the Intersects-operator where the client side search uses both, intersects and contains.



SC-2096	Wrong connection was used to get type converted map selection	<pre>com.intergraph.web.plugin.media.MediaSupportPlugin.processWorkflowAction 06.12.2017 09:00:51 SEVERE: Browse fails for url! --> [pool-4-thread-1] com.intergraph.web.plugin.media.MediaSupportPlugin.processWorkflowAction java.io.IOException: Server returned HTTP response code: 500</pre>
SC-2098	Administrator: Actions label color is black while mouse-hover	
SC-2112	PublicMaps: Full Text Search hovering color/highlight issue	Broken color/highlight of selected/hovering (keyboard) items in full text search result
SC-2126	Insert HTML ComboBox is missing for PostGIS features	When editing properties of a feature imported from PostGIS database, the "Insert HTML" combo box is missing on the Tooltip dialog.
SC-2160	GMSC throws error for Raster Feature containing SRID (other than null)	All of Customers Features contain SRIDs in the Oracle database. This works well for vector Features in GMSC. For Raster Features which contain SRID Definition, an error is thrown and Features do not Display. The coordinate System is all the same for Feature, Project and Raster data.
SC-2174	Snapping two following vertices on overlapping points (same X,Y but different Z) - the second vertex is not created	There are more points with same X,Y but different Z at one place. Snapping works fine in most of the cases, but there is a problem, when user wants to snap line to two points at one place, each time on different Z (e.g. make a vertical stair).
SC-2176	Remove DB icon for 'Hatch pattern type' (for Polygon) in Style Editor	



ABOUT US

Hexagon Geospatial helps you make sense of the dynamically changing world. We enable you to envision, experience and communicate geographic information. Our technology provides you the form to design, develop and deliver solutions that solve complex, real-world challenges. Ultimately, this is realized through our creative software products and platforms.

CUSTOMERS. Globally, a wide variety of organizations rely on our products daily including local, state and national mapping agencies, transportation departments, defense organizations, engineering and utility companies, and businesses serving agriculture and natural resource needs. Our portfolio enables these organizations to holistically understand change and make clear, reliable decisions.

TECHNOLOGY. Our priority is to deliver products, platforms and solutions that make our customers successful. Hexagon Geospatial is focused on developing technology that displays and interprets information in a personalized, meaningful way. We enable you to transform location-based content into dynamic and useable business information that creatively conveys the answers you need.

PARTNERS. As an organization, we are partner-focused, working alongside our channel to ensure we succeed together. We provide the right platforms, products, and support to our business partners so that they may successfully deliver sophisticated solutions for their customers. We recognize that we greatly extend our reach and influence by cultivating channel partner relationships both inside and outside of Hexagon.

TEAM. As an employer, we recognize that the success of our business is the result of our highly motivated and collaborative staff. At Hexagon Geospatial, we celebrate a diverse set of people and talents, and we respect people for who they are and the wealth of knowledge they bring to the table. We retain talent by fostering individual development and ensuring frequent opportunities to learn and grow.

HEXAGON. Hexagon's solutions integrate sensors, software, domain knowledge and customer workflows into intelligent information ecosystems that deliver actionable information. They are used in a broad range of vital industries.

Hexagon (Nasdaq Stockholm: HEXA B) has more than 18,000 employees in 50 countries and net sales of approximately 3.3bn USD. Learn more at hexagon.com and follow us @HexagonAB.

COPYRIGHT

© 2018 Hexagon AB and/or its subsidiaries and affiliates. All Rights Reserved. Hexagon has registered trademarks in many countries throughout the world. Visit the [Trademarks Page](#) for information about the countries in which the trademarks are registered. See Product Page and Acknowledgements for more information.

Product Documentation Terms of Use

PLEASE READ THESE TERMS CAREFULLY BEFORE USING HEXAGON GEOSPATIAL'S DOCUMENTATION ("DOCUMENT"). USE OF THIS DOCUMENT INDICATES ACCEPTANCE OF THIS AGREEMENT WITHOUT MODIFICATION. IF YOU DO NOT AGREE TO THE TERMS HEREOF ("TERMS"), DO NOT USE THIS DOCUMENT.

Use Of This Document

All materials in this Document are copyrighted and any unauthorized use may violate worldwide copyright, trademark, and other laws. Subject to the terms of this Agreement, Hexagon Geospatial (a Division of Intergraph Corporation) and Intergraph's subsidiaries ("Intergraph") hereby authorize you to reproduce this Document solely for your personal, non-commercial use. In consideration of this authorization, you agree to

retain all copyright and other proprietary notices contained therein. You may not modify the Materials in any way or reproduce or publicly display, perform, or distribute or otherwise use them for any public or commercial purpose, except as specifically authorized in a separate agreement with Hexagon Geospatial.

The foregoing authorization specifically excludes content or material bearing a copyright notice or attribution of rights of a third party. Except as expressly provided above, nothing contained herein shall be construed as conferring by implication, estoppel or otherwise any license or right under any copyright, patent or trademark of Hexagon Geospatial or Intergraph or any third party.

If you breach any of these Terms, your authorization to use this Document automatically terminates. Upon termination, you will immediately destroy any downloaded or printed Materials in your possession or control.

Disclaimers

ALL MATERIALS SUPPLIED HEREUNDER ARE PROVIDED "AS IS", WITHOUT WARRANTY OF ANY KIND, EITHER EXPRESSED OR IMPLIED, INCLUDING, BUT NOT LIMITED TO, ANY IMPLIED WARRANTIES OF MERCHANTABILITY, FITNESS FOR A PARTICULAR PURPOSE, OR NON-INFRINGEMENT. Hexagon Geospatial does not warrant that the content of this Document will be error-free, that defects will be corrected, or that any Hexagon Geospatial Website or the services that make Materials available are free of viruses or other harmful components.

Hexagon Geospatial does not warrant the accuracy and completeness of this Document. Hexagon Geospatial may make changes to this Document at any time without notice.

Limitation Of Liability

IN NO EVENT SHALL HEXAGON GEOSPATIAL BE LIABLE FOR ANY DIRECT, INDIRECT, INCIDENTAL, SPECIAL OR CONSEQUENTIAL DAMAGES, OR DAMAGES FOR LOSS OF PROFITS, REVENUE, DATA OR USE, INCURRED BY YOU OR ANY THIRD PARTY, WHETHER IN AN ACTION IN CONTRACT OR TORT, ARISING FROM YOUR ACCESS TO, OR USE OF, THIS DOCUMENT.

Indemnification

You agree to defend, indemnify, and hold harmless Hexagon Geospatial, its officers, directors, employees, and agents from and against any and all claims, liabilities, damages, losses or expense, including reasonable attorneys' fees and costs, arising out of or in any way connected with your access to or use of this Document.

Use Of Software

Use of software described in this Document is subject to the terms of the end user license agreement that accompanies the software, if any. You may not download or install any software that is accompanied by or includes an end user license agreement unless you have read and accepted the terms of such license agreement. Any such software is the copyrighted work of Hexagon Geospatial, Intergraph or its licensors. Portions of the user interface copyright 2012-2018 Telerik AD.

Links To Third Party Websites

This Document may provide links to third party websites for your convenience and information. Third party websites will be governed by their own terms and conditions. Hexagon Geospatial does not endorse companies or products to which it links.

Third party websites are owned and operated by independent parties over which Hexagon Geospatial has no control. Hexagon Geospatial shall not have any liability resulting from your use of the third party website. Any link you make to or from the third party website will be at your own risk and any information you share with the third party website will be subject to the terms of the third party website, including those relating to confidentiality, data privacy, and security.

Trademarks

The trademarks, logos and service marks ("Marks") displayed in this Document are the property of Hexagon Geospatial, Intergraph or other third parties. Users are not permitted to use Marks without the prior written consent of Hexagon Geospatial, Intergraph or the third party that owns the Mark. "Intergraph" is a registered trademark of Intergraph Corporation in the United States and in other countries. Other brands and product names are trademarks of their respective owners.

Find additional trademark information.

Procedure For Making Claims Of Copyright Infringement

Notifications of claimed copyright infringement should be sent to Hexagon Geospatial by mail at the following address: Intergraph Corporation, Attn: Intergraph Legal Department, P.O. Box 240000, Huntsville, Alabama 35824.

US Government Restricted Right

Materials are provided with "RESTRICTED RIGHTS." Use, duplication, or disclosure of Materials by the U.S. Government is subject to restrictions as set forth in FAR 52.227-14 and DFARS 252.227-7013 et seq. or successor provisions thereto. Use of Materials by the Government constitutes acknowledgement of Hexagon Geospatial or Intergraph's proprietary rights therein.

International Use

You may not use or export Materials in violation of U.S. export laws and regulations. Hexagon Geospatial makes no representation that Materials are appropriate or available for use in every country, and access to them from territories where their content is illegal is prohibited.

Hexagon Geospatial provides access to Hexagon Geospatial international data and, therefore, may contain references or cross references to Hexagon Geospatial products, programs and services that are not announced in your country. These references do not imply that Hexagon Geospatial intends to announce such products, programs or services in your country.

The Materials are subject to U.S. export control and economic sanctions laws and regulations and you agree to comply strictly with all such laws and regulations. In addition, you represent and warrant that you are not a national of, or otherwise located within, a country subject to U.S. economic sanctions (including without limitation Iran, Syria, Sudan, Cuba, and North Korea) and that you are not otherwise prohibited from receiving or accessing the Materials under U.S. export control and economic sanctions laws and regulations. Hexagon Geospatial makes no representation that the Materials are appropriate or available for use in every country, and access to them from territories where their content is illegal is prohibited. All rights to use the Materials are granted on condition that such rights are forfeited if you fail to comply with the terms of this agreement.

Revisions

Hexagon Geospatial reserves the right to revise these Terms at any time. You are responsible for regularly reviewing these Terms. Your continued use of this Document after the effective date of such changes constitutes your acceptance of and agreement to such changes.

Applicable Law

This Document is created and controlled by Hexagon Geospatial in the State of Alabama. As such, the laws of the State of Alabama will govern these Terms, without giving effect to any principles of conflicts of law. You hereby irrevocably and unconditionally consent to submit to the exclusive jurisdiction of the United States District Court for the Northern District of Alabama, Northeastern Division, or the Circuit Court for Madison County, Alabama for any litigation arising out of or relating to use of this Document (and agree not to commence any litigation relating thereto except in such courts), waive any objection to the laying of venue of any such litigation in such Courts and agree not to plead or claim in any such Courts that such litigation brought therein has been brought in an inconvenient forum. Some jurisdictions do not allow the exclusions or limitations set forth in these Terms. Such exclusions or limitations shall apply in all jurisdictions to the maximum extent allowed by applicable law.

Questions

[Contact us](#) with any questions regarding these Terms.

